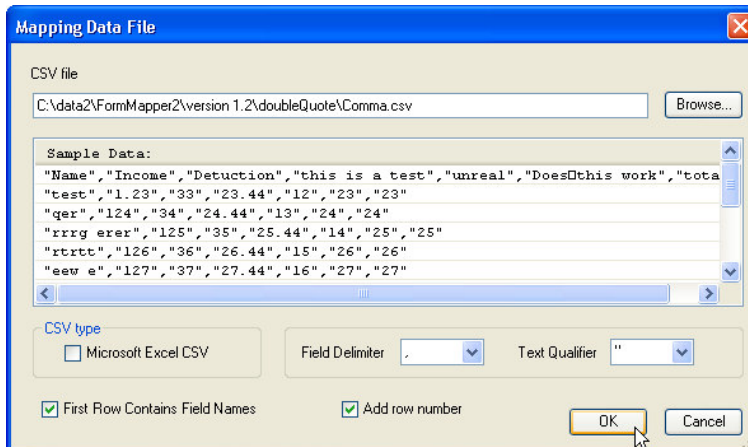


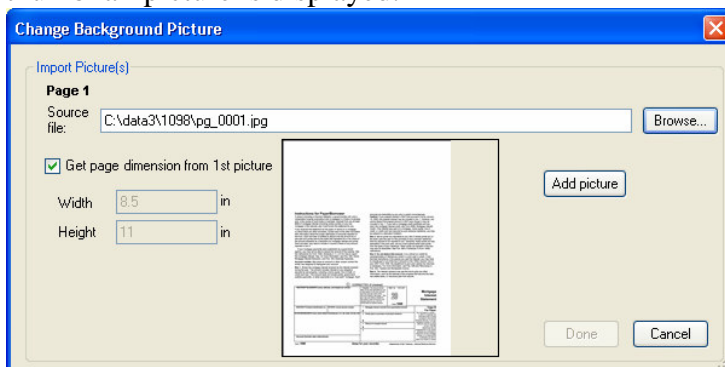
# WHAT'S NEW IN FORMMAPPER

## FormMapper 1.2

- Added support for CSV data files (Comma-separated values) in addition to XML files. The import function lets you select the CSV type (Microsoft Excel CSV or General CSV type with the choice of Field Delimiter and Text Qualifier) and indicate if the "First Row Contains Field Names" and if row numbers should be added to the XML file



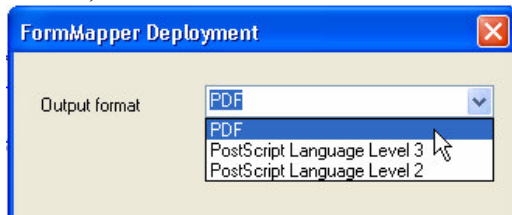
- Added feature to use pictures as background in addition to PDF files. During the import a thumbnail picture is displayed.



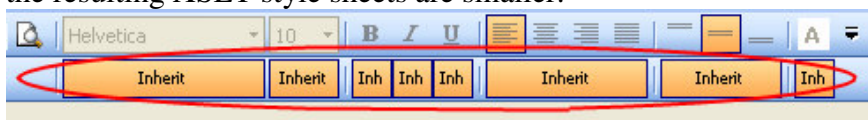
- Added resize option for the XPath constant input window.
- Added feature to move elements of the same level up and down in the mapping tree.
- Added XML Namespace support for 1:many mappings.
- Added option for intended XSLT code in the Deploy menu.
- Added latest RenderX XEP version 4.8 (fixes error discovered with the Symbol font and italic and bold)
- Fixed errors from previous version: i.e. selection of overlapping boxes
- Added automatic update feature for project files from previous version

## FormMapper 1.1

- FormMapper can create deployment packages for PDF as well as PostScript (from PDF source)

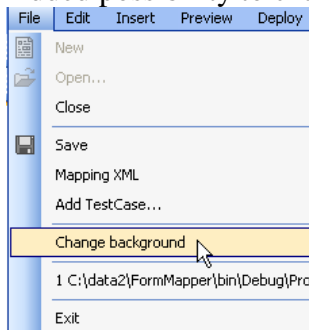


- Added “Inherit” buttons for all styling attributes. This allows style changes for the entire document with one click. The FO rendering engine will also create more PDF pages / sec as the resulting XSLT style sheets are smaller.



These changes made it necessary to introduce a new format for the project data. Existing projects will be converted automatically.

- Added possibility to change the static background layer for existing projects.



- Added the feature that selected elements can be moved with cursor keys (shifted and un-shifted)
- Added item “More Options” to right mouse-click context menu
- The string constant input form automatically expands for Multi-Line Text Boxes with multi line content. The expanded string constant input form is resizable.
- Added latest XEP version 4.7
- Fixed errors from previous version